

ROAD INDEX

A AQUILLA BLVD. C3 AQUILLA RD. A1-B6 ALDENSHIRE DR. C4	I con't K KILE RD. F4-61	S SPENCER ST. B3-84 STILLWELL RD. F3-G3 STONE SPRINGS DR. 4C
B BERKSHIRE DR. B3	J L LORING AVE. B3	T TAYLORWELLS RD. C1-D4 TURNER DR. B3
C CHARDON WINDSOR RD. D1-G2 CLARIDON TROY RD. D1-D4 CORNELIA DR. B3 CLARIDON PARK DR. D-2	M MAYFIELD RD. A4-G4 MEADOWWOOD DR. B2	U
D DURKEE RD. F6-G6	N	V
E ENSIGN RD. D5-F5	O OLD STATE RD. E1-G6	W
F FOREST RD. E4-E6	P	X
G GOREDON DR. B3	Q	Y
H HALL RD. C2-D3	R	Z
I		

- ① CLARIDON LOCAL SCHOOL
- ② EAST CLARIDON METHODIST CHURCH
- ③ THE FIRST CONGREGATIONAL CHURCH
- ④ CHRISTIAN MISSIONARY ALLIANCE CH
- ⑤ CLARIDON CENTER CEMETERY
- ⑥ EAST CLARIDON CEMETERY
- ⑦ WEST CLARIDON CEMETERY
- ⑧ CEMETERY
- ⑨ GEauga COUNTY HOME
- ⑩ GEauga COUNTY COMM HOSPITAL
- ⑪ CLARIDON TOWN HALL
- ⑫ US POST OFFICE (CLARIDON)

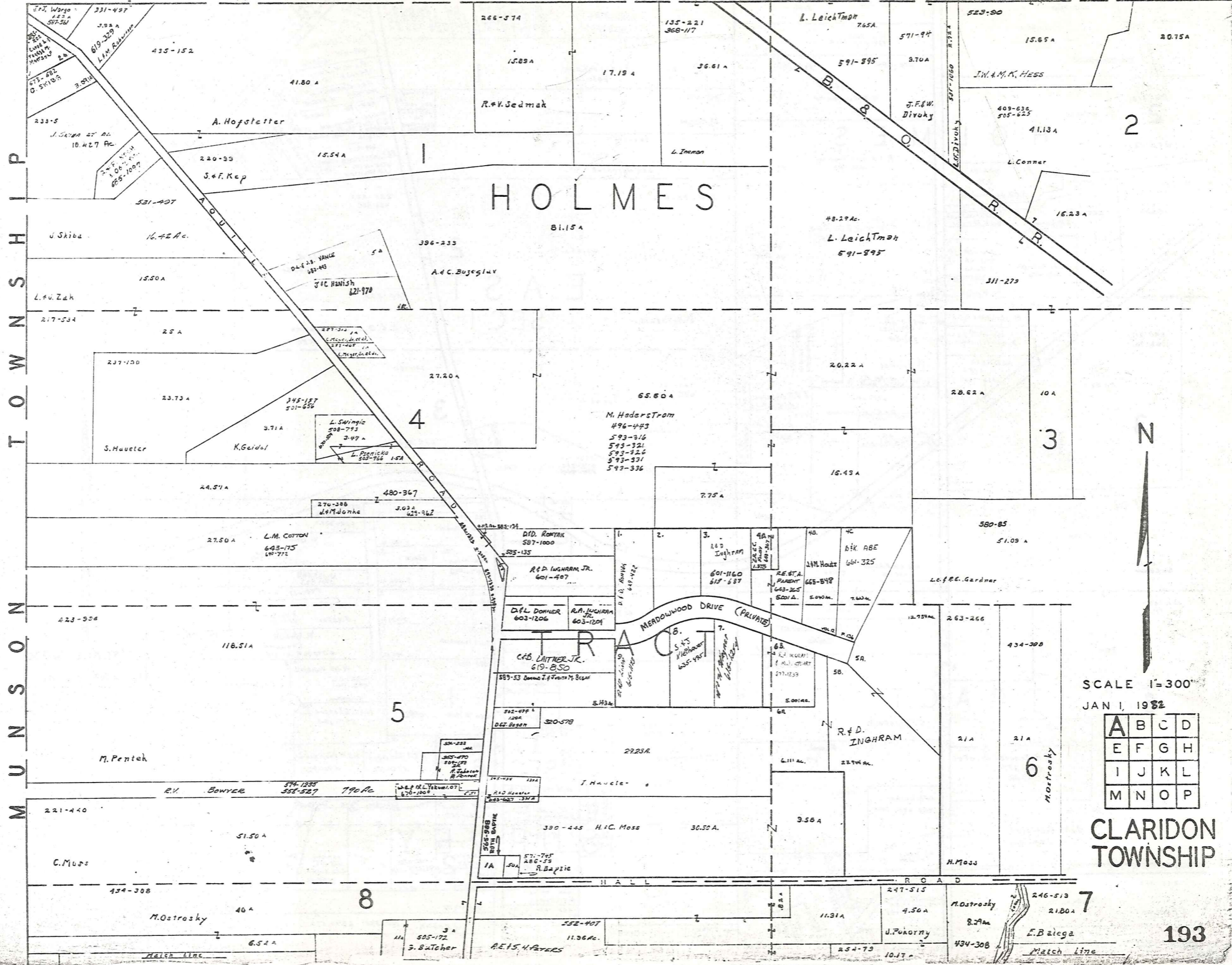
CLARIDON TOWNSHIP

SCALE 1" = 2000'

SEAUGA COUNTY ENGINEER

- UNPAVED ROAD
- PAVED ROAD
- RAILROAD
- TOWNSHIP LINE

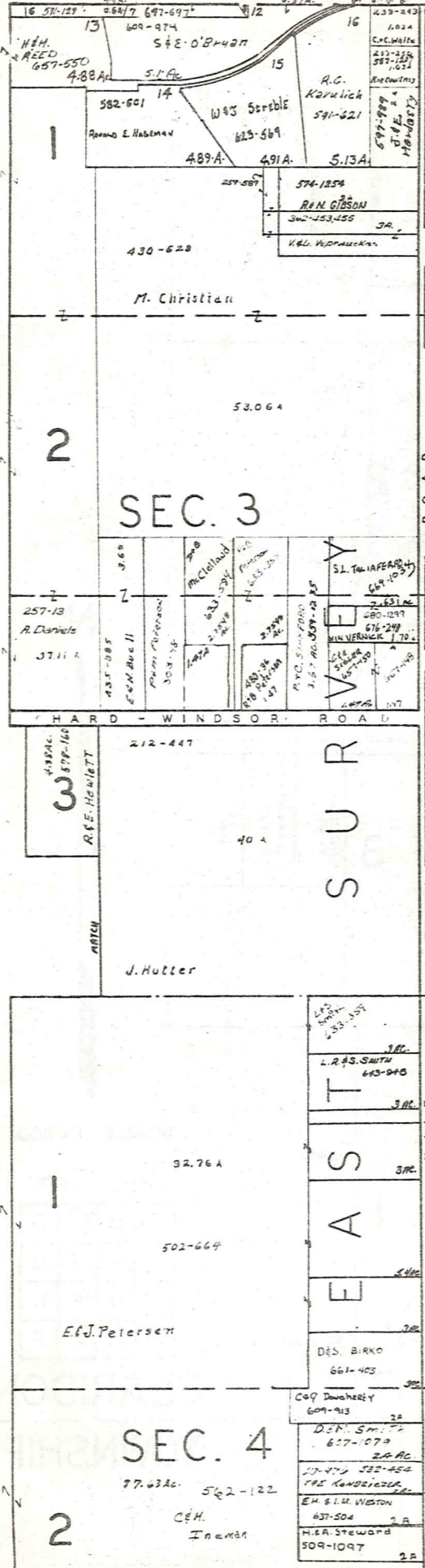
H A M B D E N T O W N S H I P



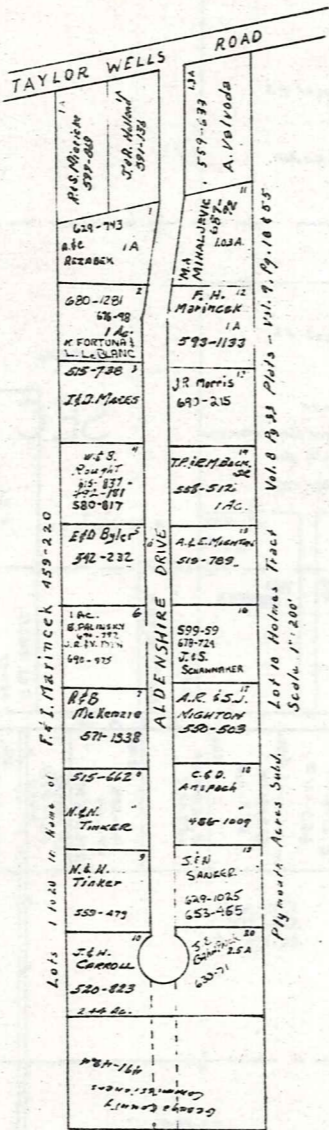
SCALE 1"=300'
JAN 1, 1982

A	B	C	D
E	F	G	H
I	J	K	L
M	N	O	P

CLARIDON TOWNSHIP



H U N T S B U R G T O W N S H I P

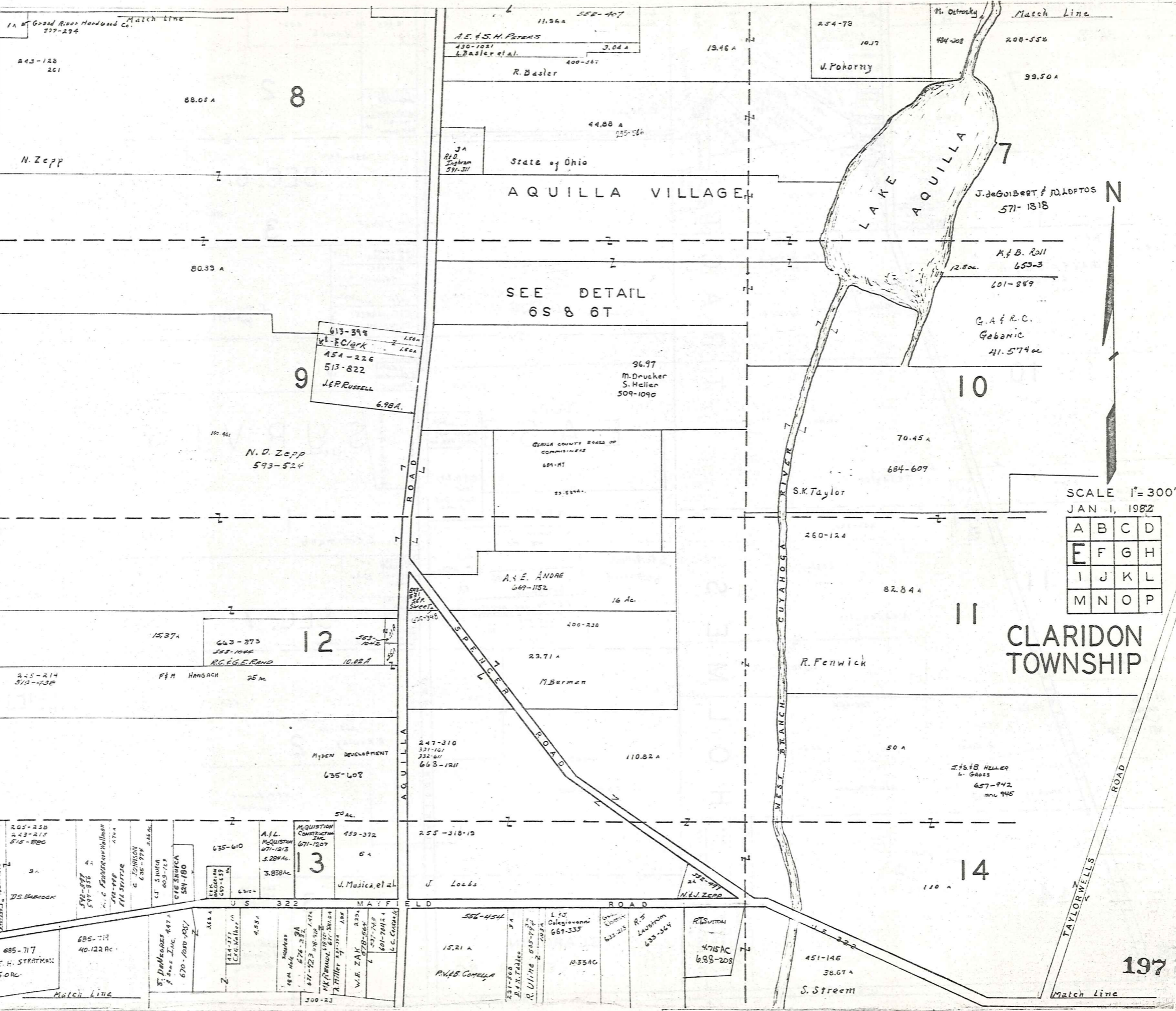


SCALE 1"=300'
JAN 1, 1982

A	B	C	D
E	F	G	H
I	J	K	L
M	N	O	P

CLARIDON TOWNSHIP

P
H
S
N
T
O
W
N
S
O
N
M
U
N
S
O
N



SCALE 1"=300'

JAN 1, 1982

A	B	C	D
E	F	G	H
I	J	K	L
M	N	O	P

CLARIDON TOWNSHIP

Match Line

588-546 2Ac.
 T. J. K. P. P. P.
 507-456
 555-445
 3 LOTS 2.0 Ac.
 F. J. HENRY
 503-801 2.00
 J. A. M. HESS 2A:
 515-507
 537-1250
 511-515
 2A. R. BERRY
 M. S. Y. MEADOWS
 643-75 2.26 Ac.

562-122
 77. Ac.
 C. M. Inman

SEC. 4

200-101
 509-615
 16.72 A

A. Wolf
 R. Post

552-158
 H. B. & I. M. CHAPMAN
 6,397 A

452-733
 33.21 A

R. Kelsey, Jr

20.60 A
 62-1033
 H. Esser

STILLWELL ROAD

425-330
 1722
 496-328
 3 A
 G. C. Karch Jr.
 1A

201-91
 56 A

City of Akron

200-432

2

51.75 A

SEC. 9

City of Akron

Vol. 6, P. 445
 DeMko-Lewis Sub. Div.
 135-4
 DeA. Langer
 643-518, 1802
 R. BARTUNEK
 245-316
 232-516

200-415
 127.26 A

MAYFIELD ROAD

200

City of Akron

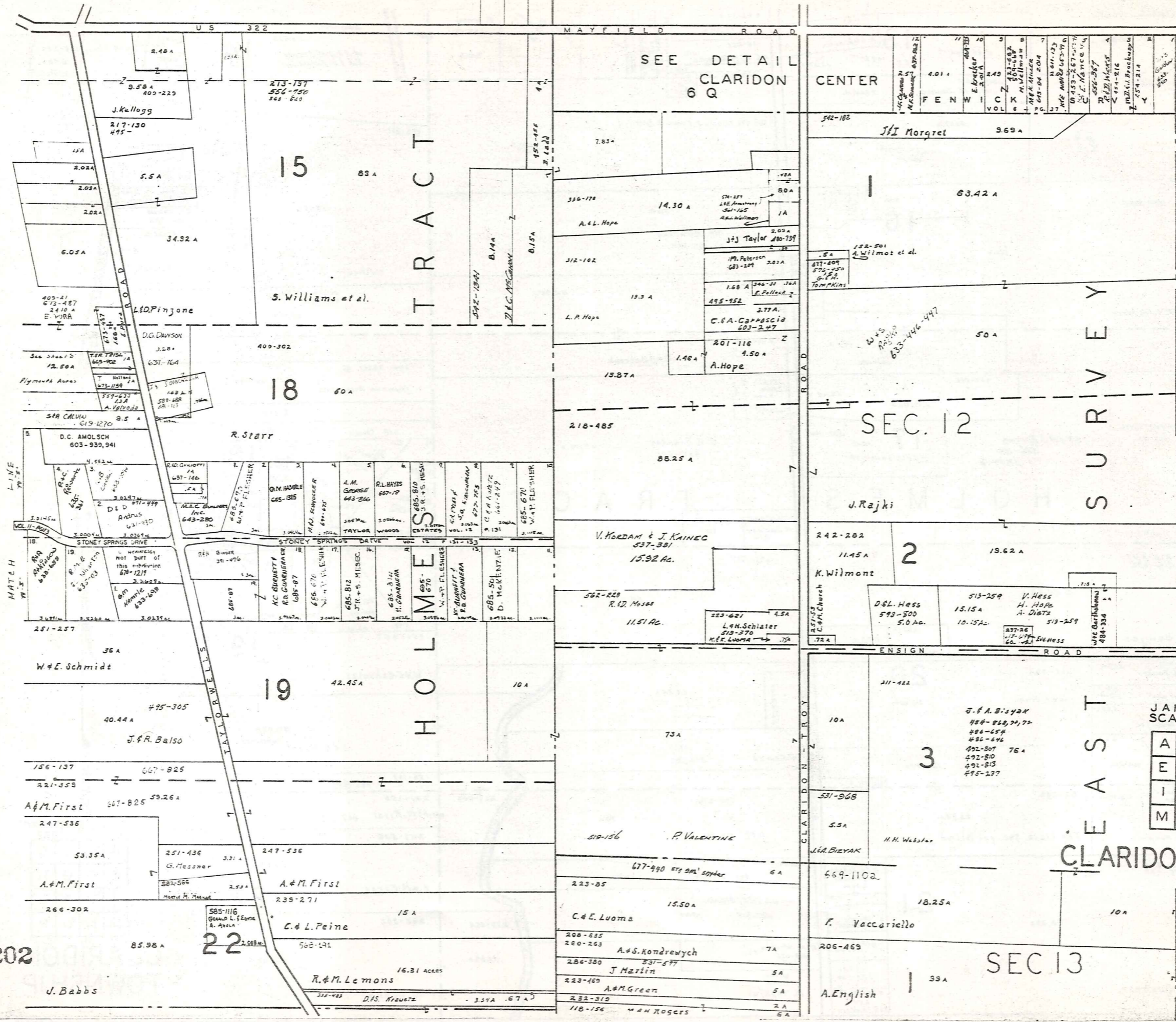
H U N T S B U R G
 T O W N S H I P
 E A S T
 S U R V E Y



SCALE 1"=300'
 JAN 1, 1982*

A	B	C	D
E	F	G	H
I	J	K	L
M	N	O	P

CLARIDON
 TOWNSHIP



SEE DETAIL CLARIDON 6 Q

401	402	403	404	405	406	407	408	409	410
411	412	413	414	415	416	417	418	419	420
421	422	423	424	425	426	427	428	429	430
431	432	433	434	435	436	437	438	439	440
441	442	443	444	445	446	447	448	449	450

SEC. 12

JAN 1 1982
SCALE 1"=300'

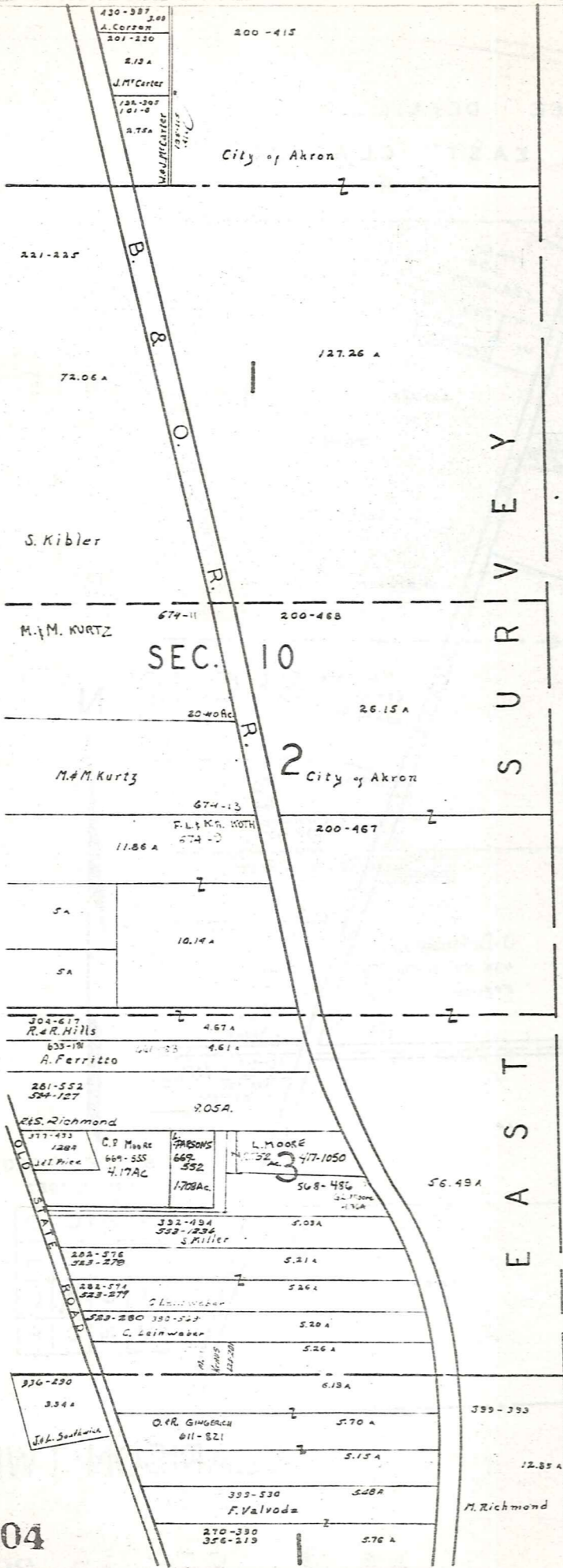
A	B	C	D
E	F	G	H
I	J	K	L
M	N	O	P

CLARIDON TWP.

SEC. 13

202





S U R V E Y
 T O W N S H I P
 H U N T S B U R G
 E A S T

SEC. 10

2

3



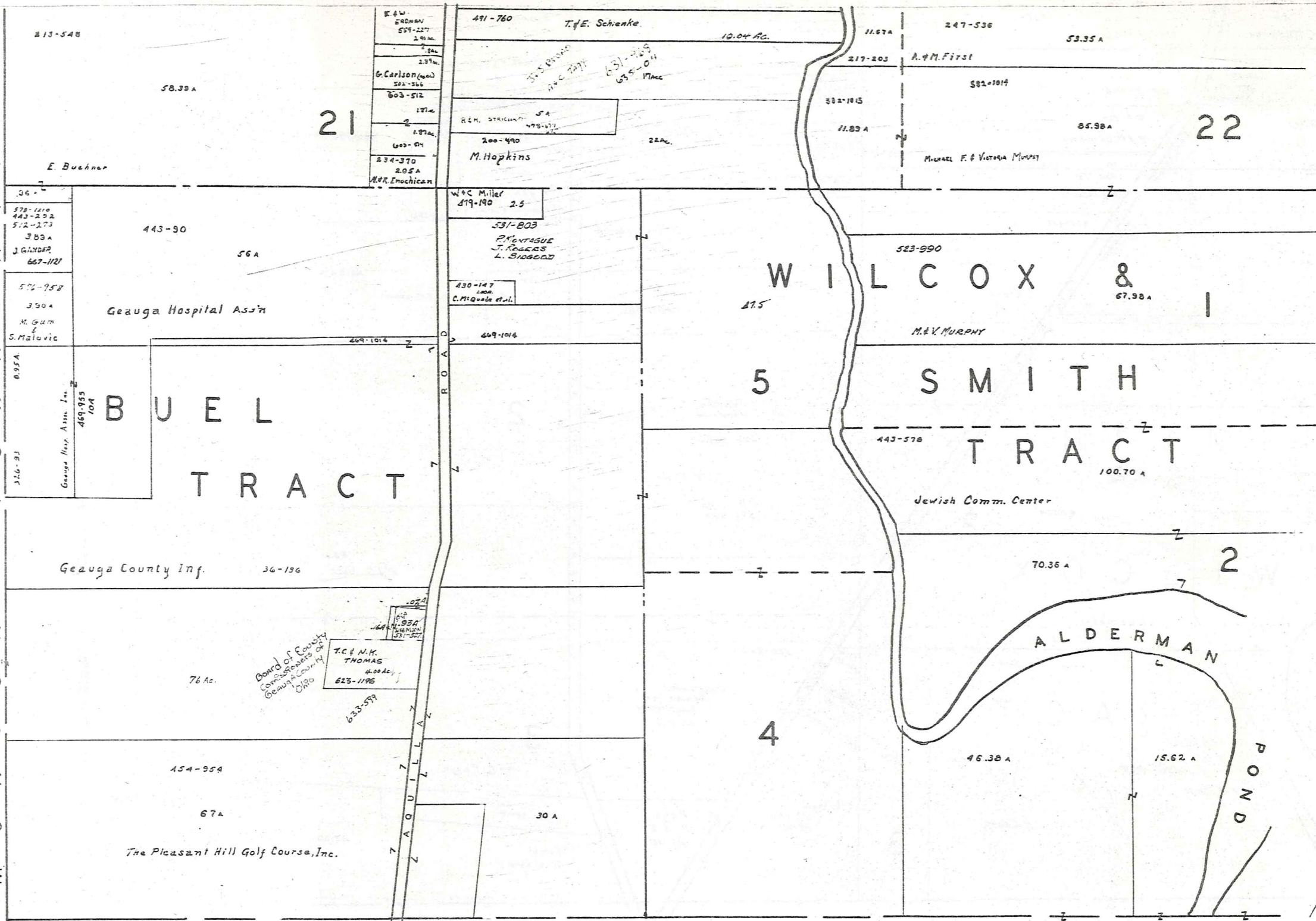
SCALE 1" = 300'
 JAN 1, 1982

A	B	C	D
E	F	G	H
I	J	K	L
M	N	O	P

CLARIDON TWP.

M
U
N
I
C
I
P
A
L
T
O
W
N
S
H
I
P

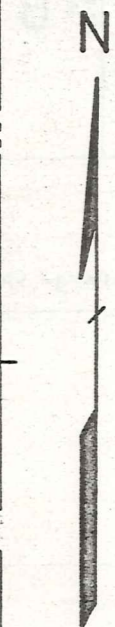
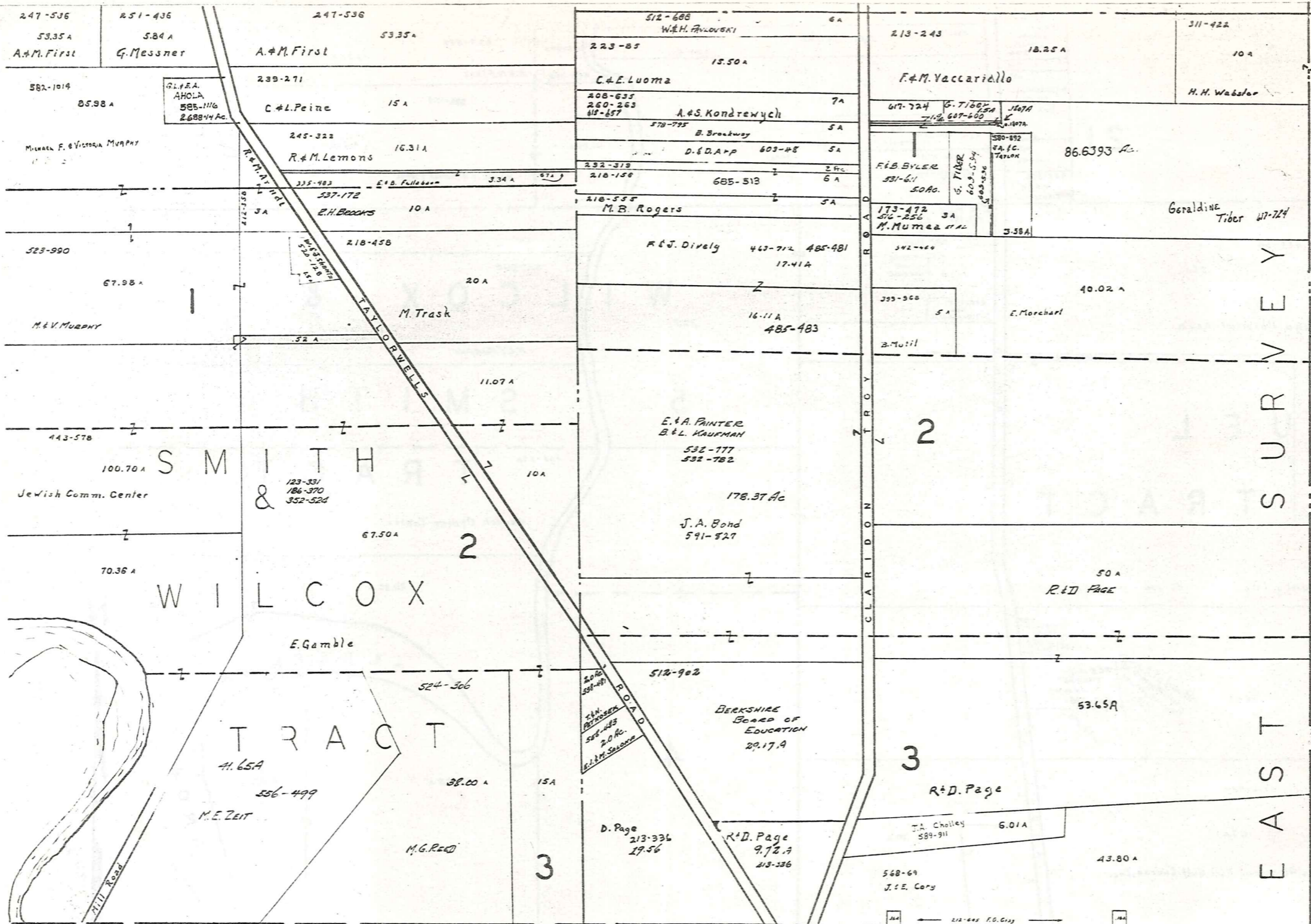
B
U
R
T
O
N
T
O
W
N
S
H
I
P



SCALE 1" = 300'
JAN 1, 1982

A	B	C	D
E	F	G	H
I	J	K	L
M	N	O	P

CLARIDON TWP
205

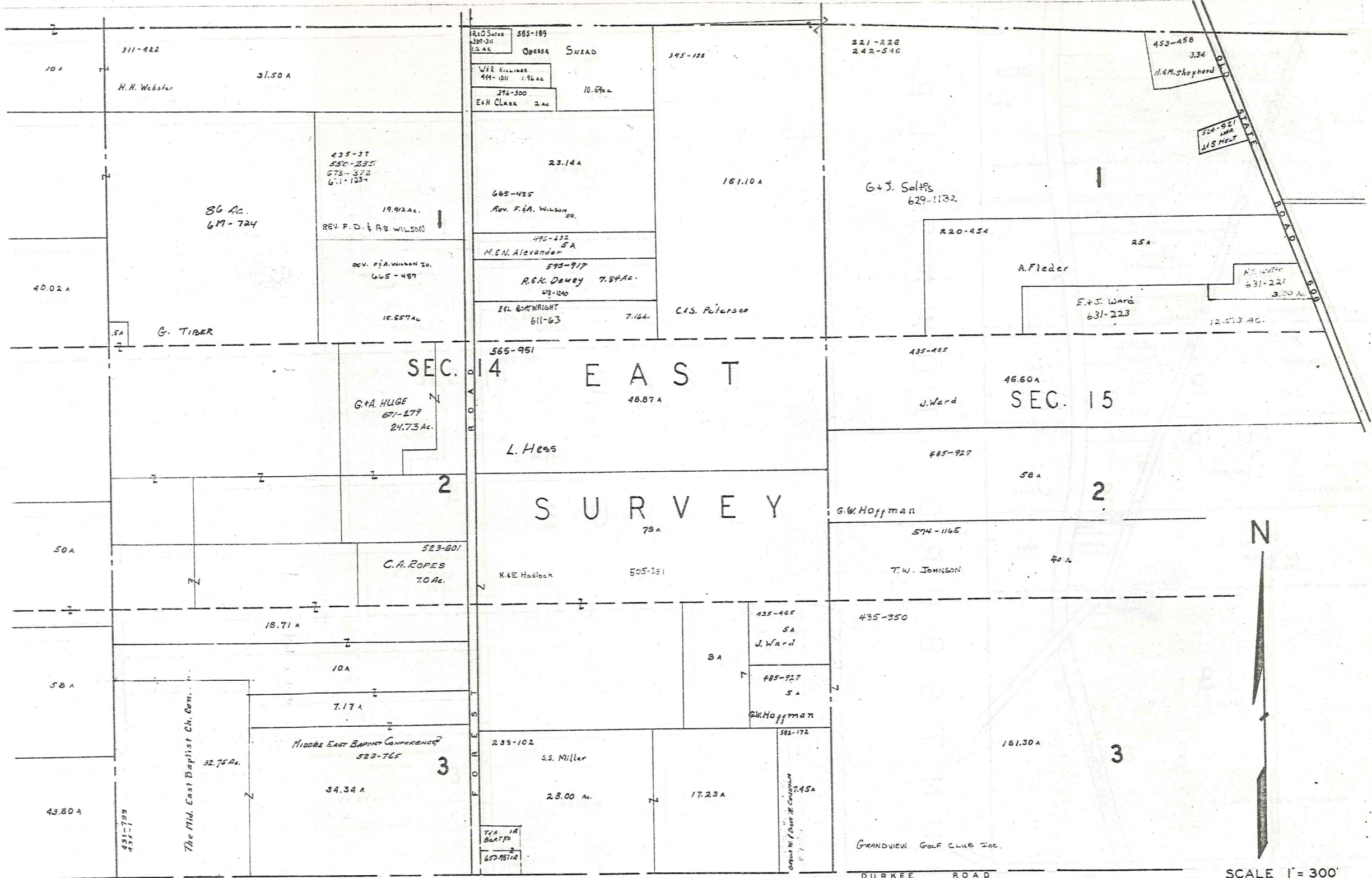


SCALE 1" = 300'
JAN 1, 1982

BURTON TOWNSHIP

A	B	C	D
E	F	G	H
I	J	K	L
M	N	O	P

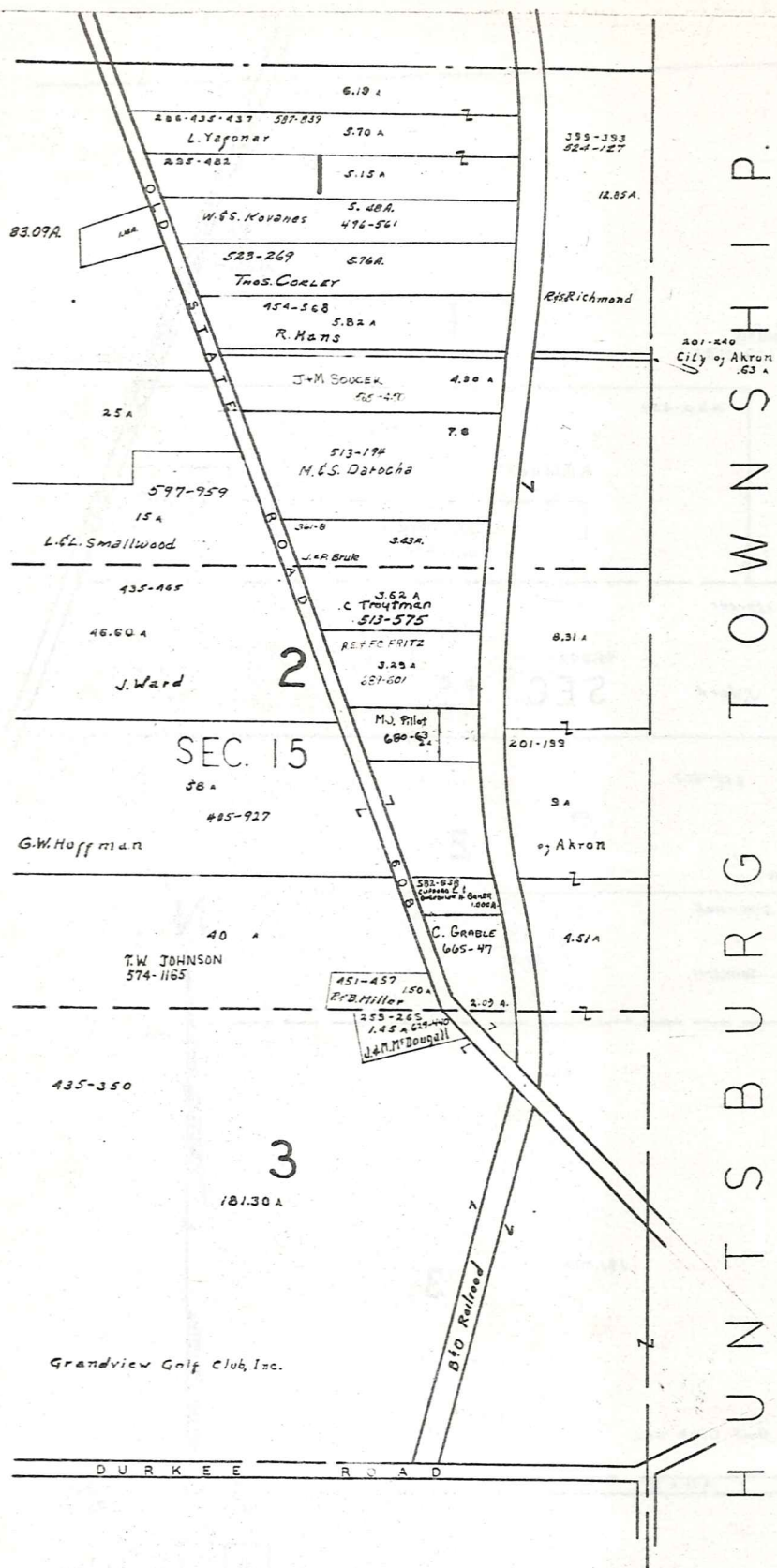
CLARIDON TWP.



SCALE 1" = 300'
 JAN 1, 1982

A	B	C	D
E	F	G	H
I	J	K	L
M	N	O	P

CLARIDON TWP.



HUNTSBURG TOWNSHIP

BURTON TWP.

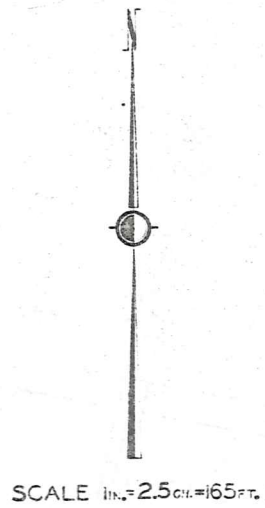


SCALE 1" = 300'
JAN 1, 1982

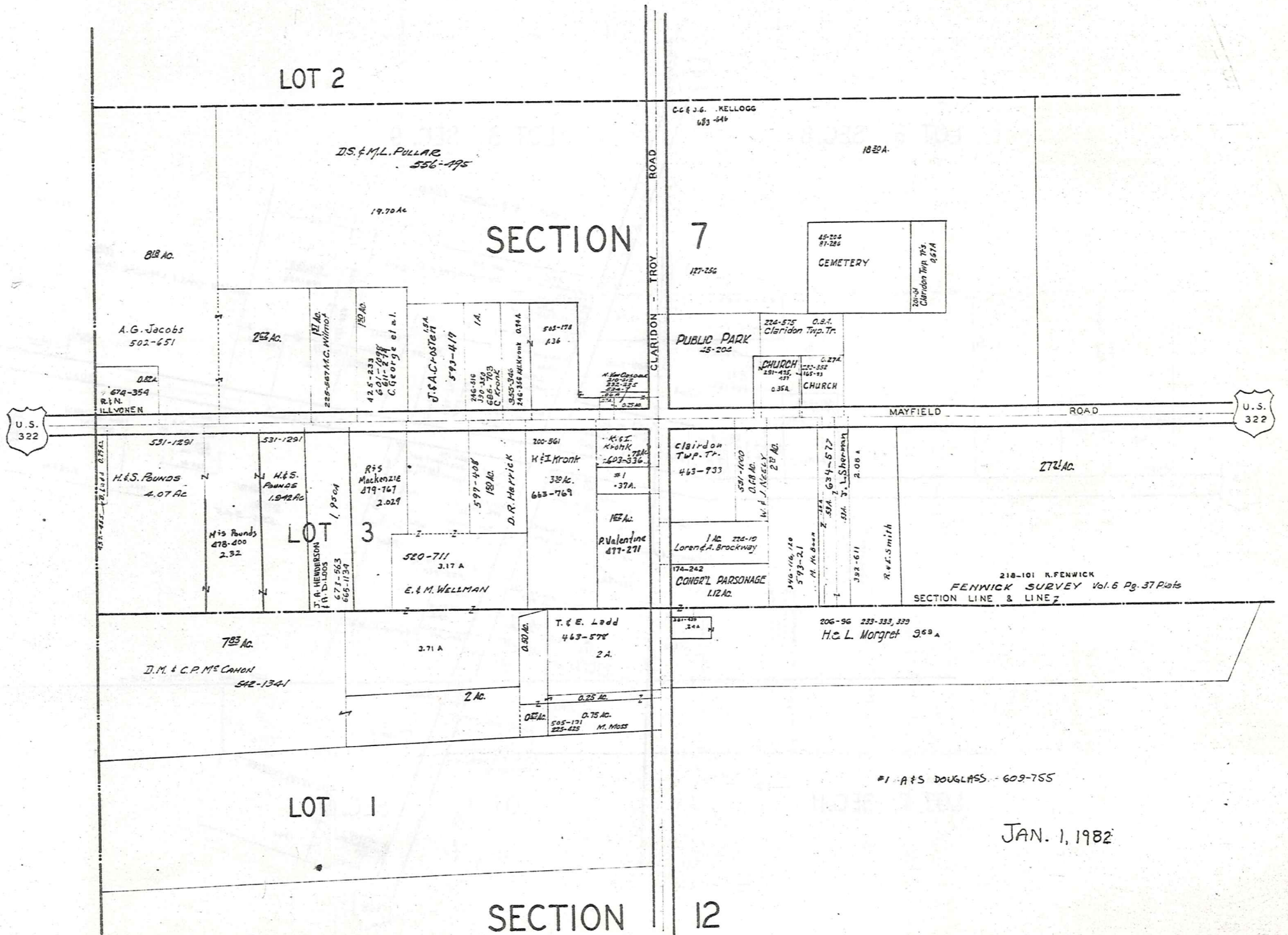
A	B	C	D
E	F	G	H
I	J	K	L
M	N	O	P

CLARIDON TWP.

CLARIDON T.P. [CENTER]



JAN 1, 1982



EAST CLARIDON
AND VICINITY

CLARIDON TP.

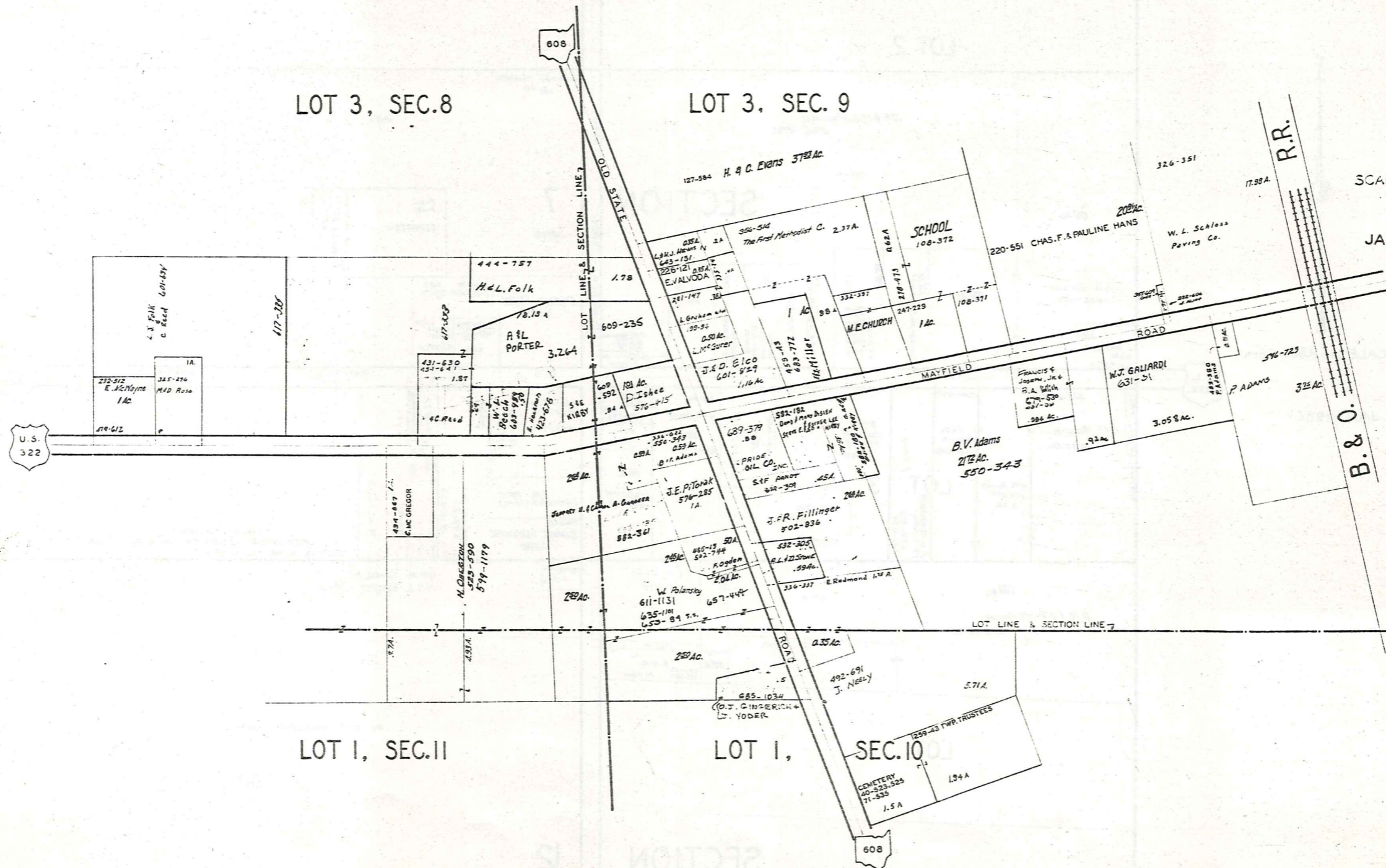
EAST CLARIDON
AND VICINITY

LOT 3, SEC. 8

LOT 3, SEC. 9

LOT I, SEC. II

LOT I, SEC. 10



SCALE 1IN.=25CH.=165'

JAN. 1, 1982



SCALE 1/4" = 30 FT.

SEE 6 - S - CTR.

57	519-580	J. JAYE	.103A	.103A
58	503-13		.103A	.103A
59	E.F.E. COFFMAN		.103A	.103A
	581-727		.103A	.103A
	E.F.E. COFFMAN		.103A	.103A
60	179-381	J.B. & L. CHAPARD	.103A	.103A
61	524-79	E.F.E. COFFMAN	.103A	.103A
62	524-642		.103A	.103A
63		G. A. DAVIS	.103A	.103A
64		484-742	.103A	.103A
65	105-402	J.J. ZEMAJ ETAL	.103A	.103A
66		J.S. & L.J. TRICK	.103A	.103A
	643-48		.103A	.103A
67			.103A	.103A
68			.103A	.103A
69	653-174	C.F.S. CHEATHAM	.103A	.103A
70		R. ADELSON	.102A	.102A
	635-686		.102A	.102A
71			.102A	.102A
72			.102A	.102A
73		A. CAIN	.102A	.102A
	427-692		.102A	.102A
74		A. CAIN	.102A	.102A
75	485-925	V. BLANK	.102A	.102A
76	192-600	H.G. & H.M. HECKER	.102A	.102A
77	631-104		.102A	.102A
78		L. Shea & F.R. R. Baumgartner	.102A	.102A
	54 miles 135000		.102A	.102A
79			.102A	.102A
80		D.A. LOFTUS	.092A	.092A
81			.092A	.092A
82			.092A	.092A

GOREDON DRIVE 40'

108			.104A	.104A
107	303-781		.103A	.103A
106		A. & E. DE WEESE	.104A	.104A
		CUSTOM ACQUIRED PROPERTIES	.104A	.104A
		657-498	.104A	.104A
105		552-659	.104A	.104A
104		Condon Aquis	.104A	.104A
		633-150	.104A	.104A
103			.104A	.104A
102			.104A	.104A
101			.104A	.104A
100	410-99		.104A	.104A
99		F.F.M. NANCE	.104A	.104A
	538-789		.104A	.104A
98	224-204	S. VARGO	.104A	.104A
97			.052A	.052A
96		C.F.S. COX	.104A	.104A
	661-882		.104A	.104A
95			.104A	.104A
94	016-554	S. & T. VARGO	.104A	.104A
93			.104A	.104A
		S.J. Smith 573-144	.104A	.104A
92			.104A	.104A
	253-282		.104A	.104A
91			.104A	.104A
90		G.H. Dymus 642-557	.104A	.104A
		A. & B. Dymus 588-50	.104A	.104A
89			.104A	.104A
88			.104A	.104A
	287-388		.104A	.104A
87			.104A	.104A
		H. PILDNER 217-614	.052A	.052A
86			.104A	.104A
		2 23-54	.104A	.104A
85			.092A	.092A
84	233-249	L. ZINNER	.092A	.092A
83			.115A	.115A
		J.E. Rider	.115A	.115A
207	255-98	O. Anderson ETAL	.105A	.105A
206	316-182	M.C. KOVACH	.092A	.092A
205	188-223	AQUILLA LAKE COM.	.092A	.092A

AQUILLA BOULEVARD

233	647-39	A.C. MILLER	.107A	.233A
232	452-70		.107A	.232A
231		H.G. Cahill	.108A	.231A
230			.106A	.106A
	418-180		.106A	.106A
	596-1120		.106A	.106A
	E.A. Soika		.106A	.106A
229		603-400	.108A	.229A
	REX DADOS		.108A	.229A
228			.105A	.228A
	502-1140		.105A	.228A
227		M. GUEVA	.105A	.227A
226			.105A	.226A
	586-4		.105A	.226A
	M.L. OREGA		.105A	.226A
225		F. AS. STROMBERG	.105A	.225A
	653-769		.105A	.225A
	J.L. DADA		.105A	.225A
	678-944		.105A	.225A
224	239-87		.104A	.224A
223			.104A	.223A
222			.104A	.222A
221			.104A	.221A
	423-1037		.104A	.221A
	574-336		.104A	.221A
	R. Sharp		.104A	.221A
220			.103A	.220A
219			.103A	.219A
	418-601		.103A	.219A
	J. & C. Orloff		.103A	.219A
218			.105A	.218A
217			.103A	.217A
216			.102A	.216A
215			.102A	.215A
	635-1050		.102A	.215A
	G.H. Henderson, Sr.		.102A	.215A
214			.102A	.214A
	105-354	J.H. TRAVERSE JR.	.102A	.214A
	677-678		.102A	.214A
213			.101A	.213A
	285-1091	R. TARANTINO	.101A	.213A
212			.101A	.212A
	251-241	S.B.J. CENTA	.101A	.212A
211			.101A	.211A
	245-598	S.B.J. CENTA	.101A	.211A
210			.092A	.092A
209			.092A	.092A
208			.103A	.103A
	667-1317		.103A	.103A
	E. BEAN		.103A	.103A

TURNER DRIVE 40'

NOW

211

6-S EAST

SCALE 1" = 30 FT.



31	.091 A.	
32	.091 A.	L.P. MANN 044 320-141
33	.091 A.	E. N. SINKKO 501-790
34	.093 A.	
35	.095 A.	C. B. MUMVILLER 611-231
36	.049 A.	
37	.101 A.	C. B. MUMVILLER 399-561 594-229
38	.104 A.	C. A. EASTON 992-517
39	.107 A.	524-740
40	.109 A.	
41	.112 A.	M. BAKER 524-70
42	.115 A.	179-346 M. MCGREGOR
43	.118 A.	O. W. SMITH 528-371
44	.120 A.	
45	.123 A.	
46	.125 A.	248-317 O. W. SMITH
47	.128 A.	P. G. RECKART 482-586
48	.131 A.	P. B. C. L. RECKART 637-106
49	.134 A.	C. A. MERRIMAN 644-187
50	.065 A.	CLARA MERRIMAN 320-527
51	.079 A.	335-215 C. A. MERRIMAN
52	.079 A.	M. V. SCHONEN 643-1061
53	.079 A.	
54	.079 A.	J. CAZZELLI 637-220 647-682
55	.122 A.	177-582 AQUILLA LAKE COMMUNITY, INC.
56	.116 A.	R. HAY 641-770 T. SHAKER

132	.105 A.	158 199-925 W. HENDERSHOT
131	.105 A.	159 203-445 F. & B. WEEKS
130	.108 A.	160 201-458 B. WEEKS
129	.109 A.	161A 220-368 B. A. WEEKS
128B	.099 A.	161B
128A	.108 A.	162 195-225 162A Z 550-836
127	.106 A.	163 C. B. MUMVILLER JR. 689-1063
126	.105 A.	164 P. OLP 625-1135
125	.104 A.	165 229-44F. & M. STRONG 178-966
124	.102 A.	166
123	.101 A.	167 M. E. RIDDY 677-7311
122	.099 A.	168 MRS WAGNER 484-23
121	.098 A.	169
120	.097 A.	170 C. G. COLLINS 617-448
119	.095 A.	171 R. NORRIS 637-280
118	.095 A.	172 619-991 619-989
117	.093 A.	173 C. COLLINS 619-989
116	.091 A.	174 C. A. DOUGHERTY 552-870 413-213
115	.090 A.	175 514-904 587-922
114	.087 A.	176 J. S. & K. J. FERGUSON 678-264
113	.087 A.	177 M. E. & H. S. BURROW 558-271
112	.082 A.	178 619-1158
111	.081 A.	179 J. PARKER
110	.084 A.	180 M. E. & H. S. BURROW 611-1011
109	.089 A.	181 627-970 444-166 A. GATES

259	.104 A.	259 A
258	.104 A.	258 A
257	.105 A.	257 A
256	.105 A.	256 A
255	.105 A.	255 A
254	.105 A.	254 A
253	.106 A.	253 A
252	.106 A.	252 A
251	.107 A.	251 A
250	.107 A.	250 A
249	.108 A.	249 A
248	.108 A.	248 A
247	.108 A.	247 A
246	.109 A.	246 A
245	.109 A.	245 A
244	.110 A.	244 A
243	.110 A.	243 A
242	.110 A.	242 A
241	.110 A.	241 A
240	.111 A.	240 A
239	.111 A.	239 A
238	.111 A.	238 A
237	.108 A.	237 A
236	.108 A.	236 A
235	.107 A.	235 A
234	.107 A.	234 A

TURNER DRIVE 40'

GOREDON DRIVE 40'

LORING AVENUE

PARK

LAKE AQUILLA SUBDIVISION NO 1 & LAKE AQUILLA SUBDIVISION NO 1 ADDITION VOL 1 PGS 50 & 51 REC OF PLATS

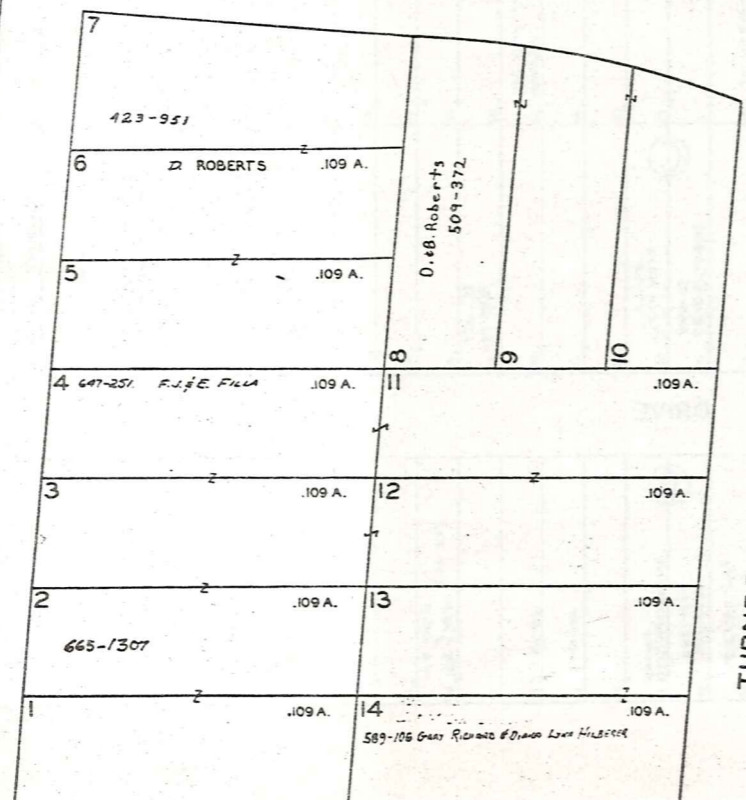
NOV AQUILLA VILLAGE VOL 4 PAGES 26-27 REC. OF PLATS JAN. 1, 1988

SCALE 1IN.=30 FT.

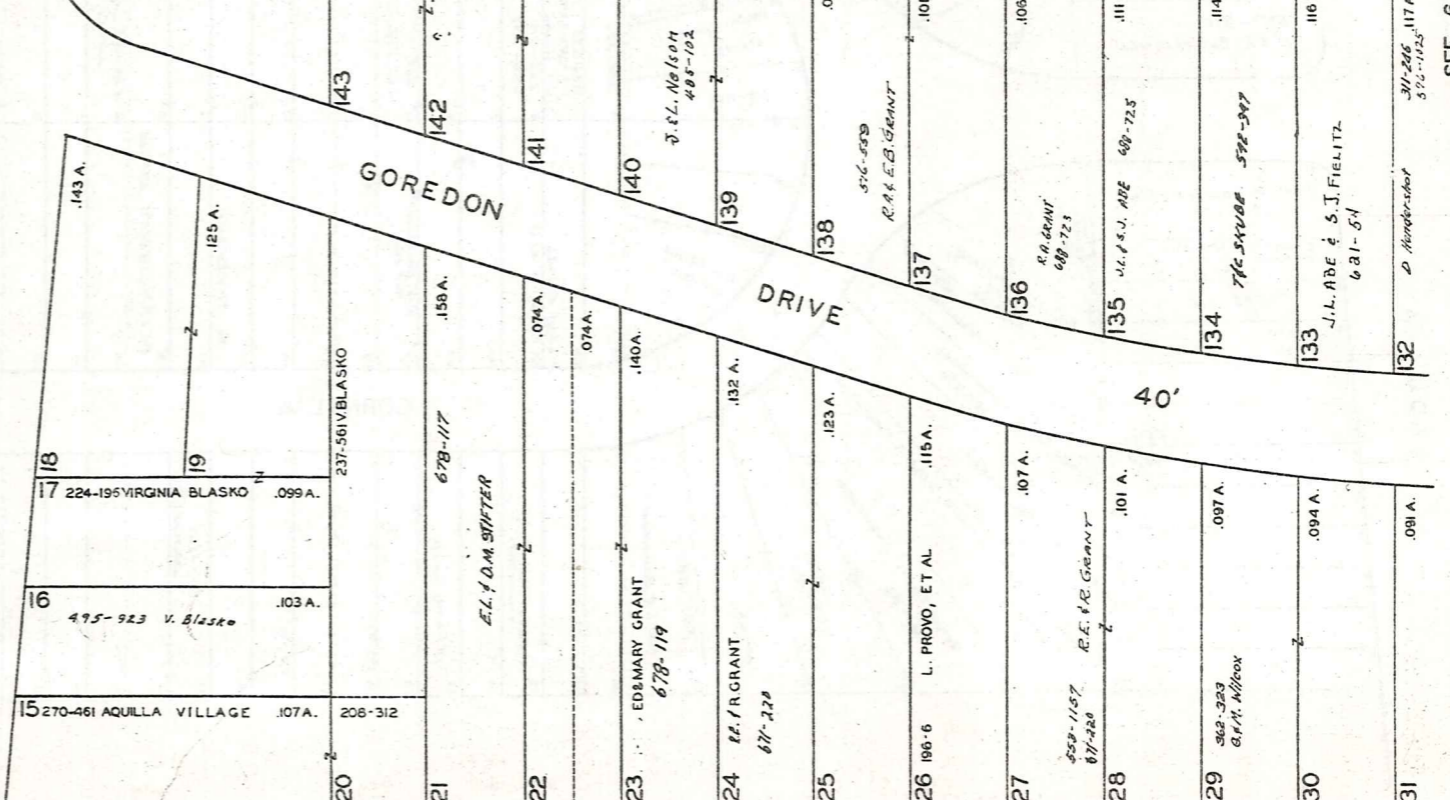


AQUILLA ROAD

60'

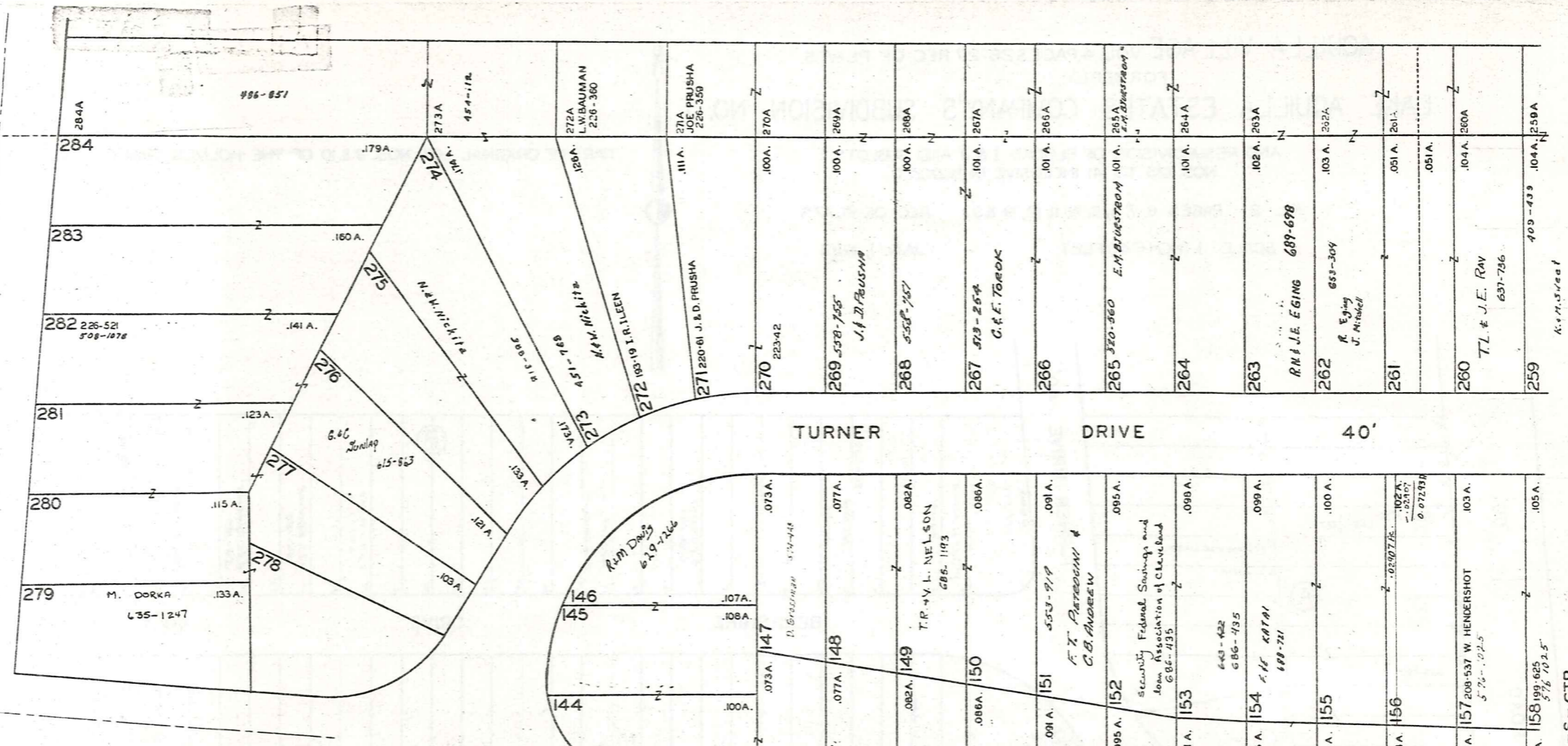


TURNER DRIVE



GOREDON DRIVE

40'



TURNER DRIVE 40'

LAKE AQUILLA SUBDIVISION NO. 1 & LAKE AQUILLA SUBDIVISION NO. 1 ADDITION VOL. 1 PGS 50 & 51 REC. OF PLATS VOL. 4 PGS 23 & 24 REC. OF PLATS NOW AQUILLA VILLAGE VOL. 4 PAGES 26-27 REC. OF PLATS JAN. 1, 1982

SEE 6-S-CTR.

6-S WEST 212

**AQUILLA VILLAGE VOL. 4, PAGES 26-27 REC. OF PLATS
FORMERLY
LAKE AQUILLA ESTATES COMPANY'S SUBDIVISION NO. 1**

AND RESUBDIVISION OF BLOCKS I & J AND SUBLOTS
NOS. 125 TO 141 INCLUSIVE IN BLOCK D

PART OF ORIGINAL LOT NOS. 9 & 10 OF THE HOLMES TRACT CLARIDON TOWNSHIP

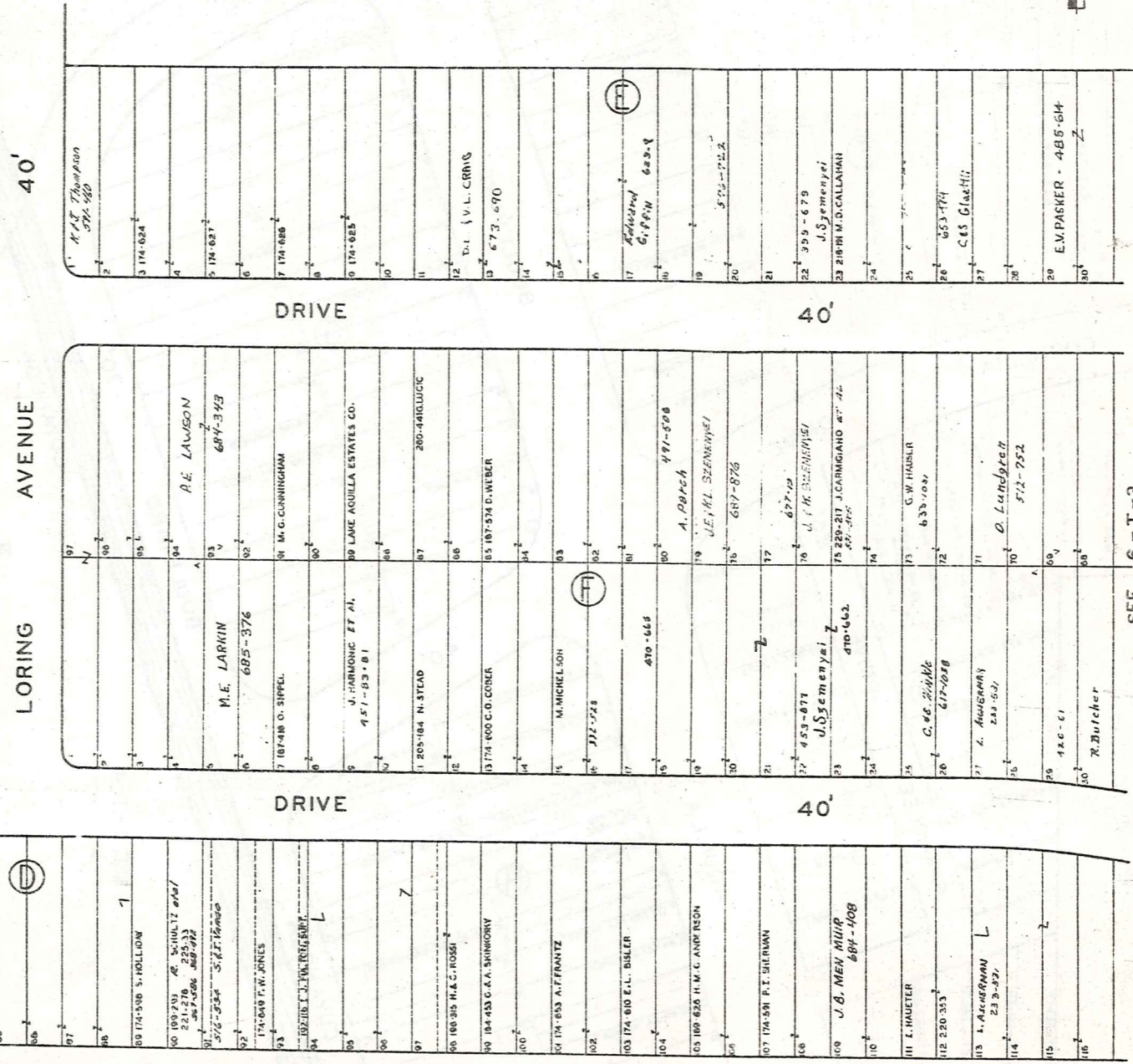
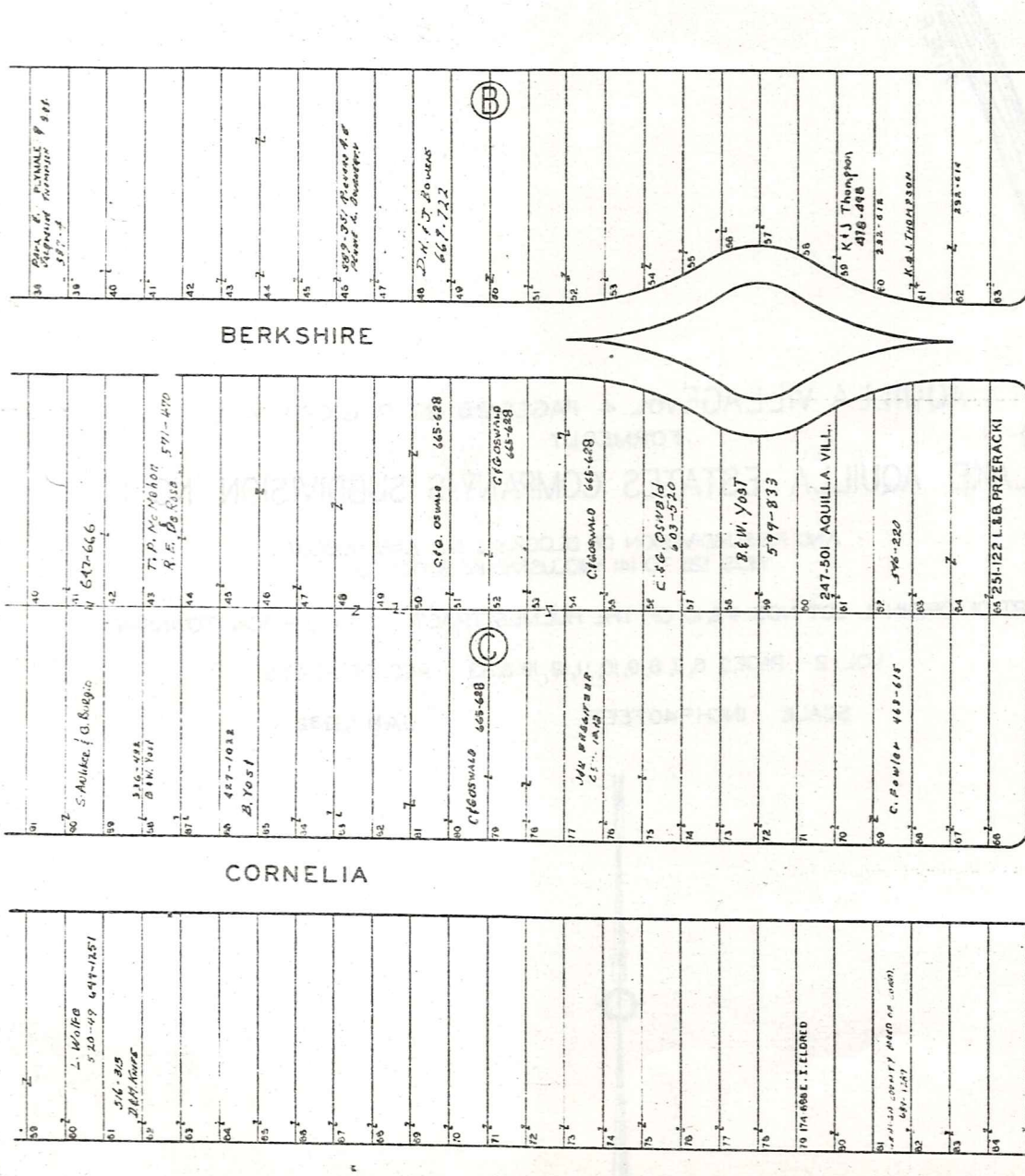
VOL. 2 PAGES 6, 7, 8, 9, 10, 11, 12, 19 & 33 REC. OF PLATS

SCALE 1 INCH = 40 FEET

JAN. 1, 1982



SEE 6-T-1



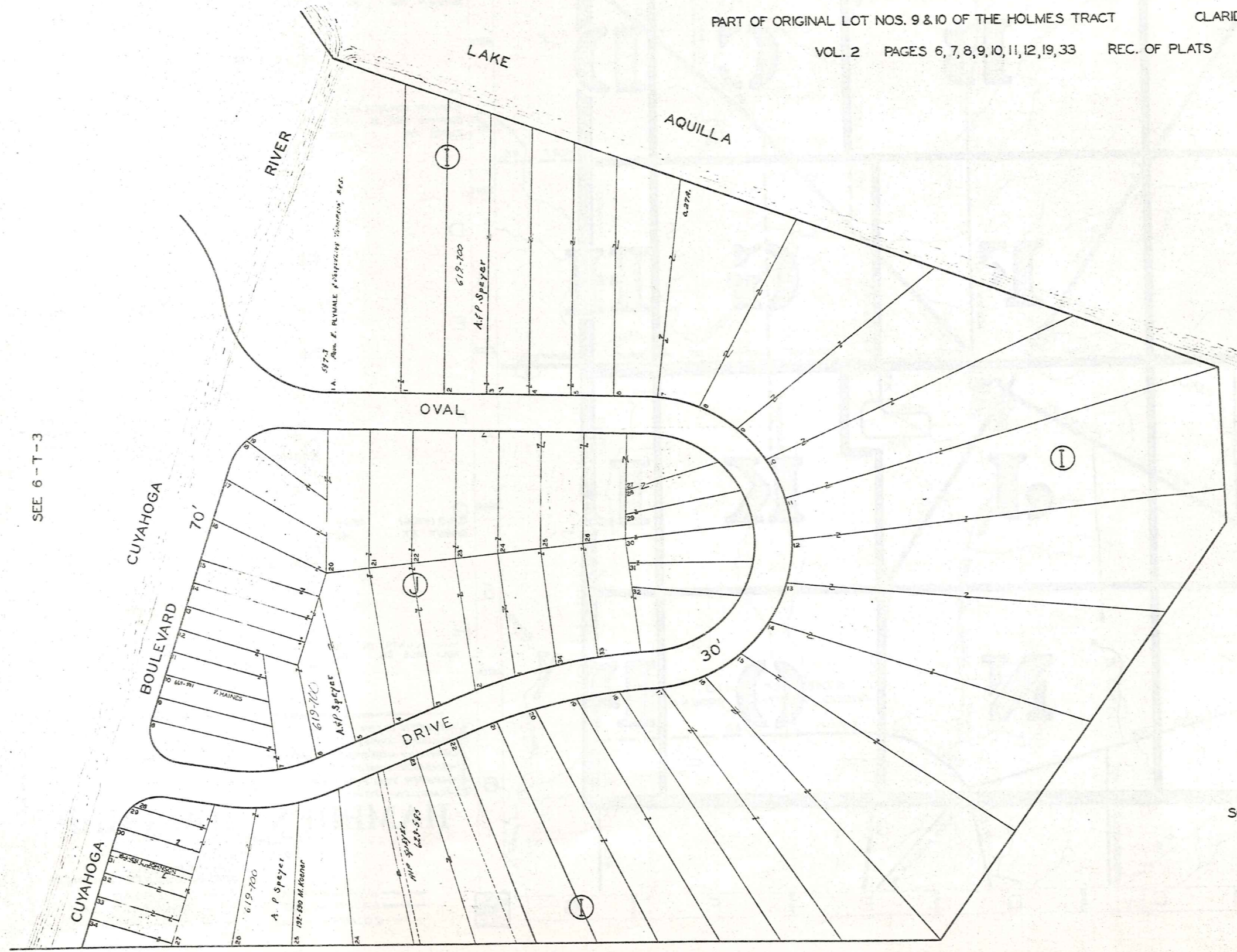
SEE 6-T-3

AQUILLA VILLAGE VOL. 4 PAGES 26-27 REC. OF PLATS
FORMERLY
LAKE AQUILLA ESTATES COMPANY'S SUBDIVISION NO. 1

AND RESUBDIVISION OF BLOCKS I & J AND SUBLOTS
NOS. 125 TO 141 INCLUSIVE IN BLOCK D

PART OF ORIGINAL LOT NOS. 9 & 10 OF THE HOLMES TRACT CLARIDON TOWNSHIP

VOL. 2 PAGES 6, 7, 8, 9, 10, 11, 12, 19, 33 REC. OF PLATS



SEE 6-T-3

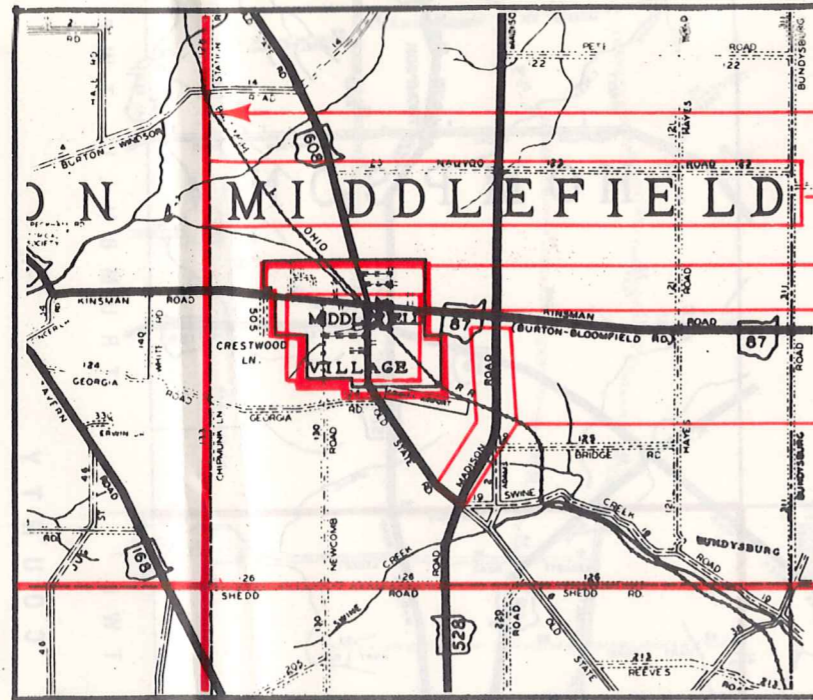


SCALE 1 INCH = 40 FEET

JAN. 1, 1982

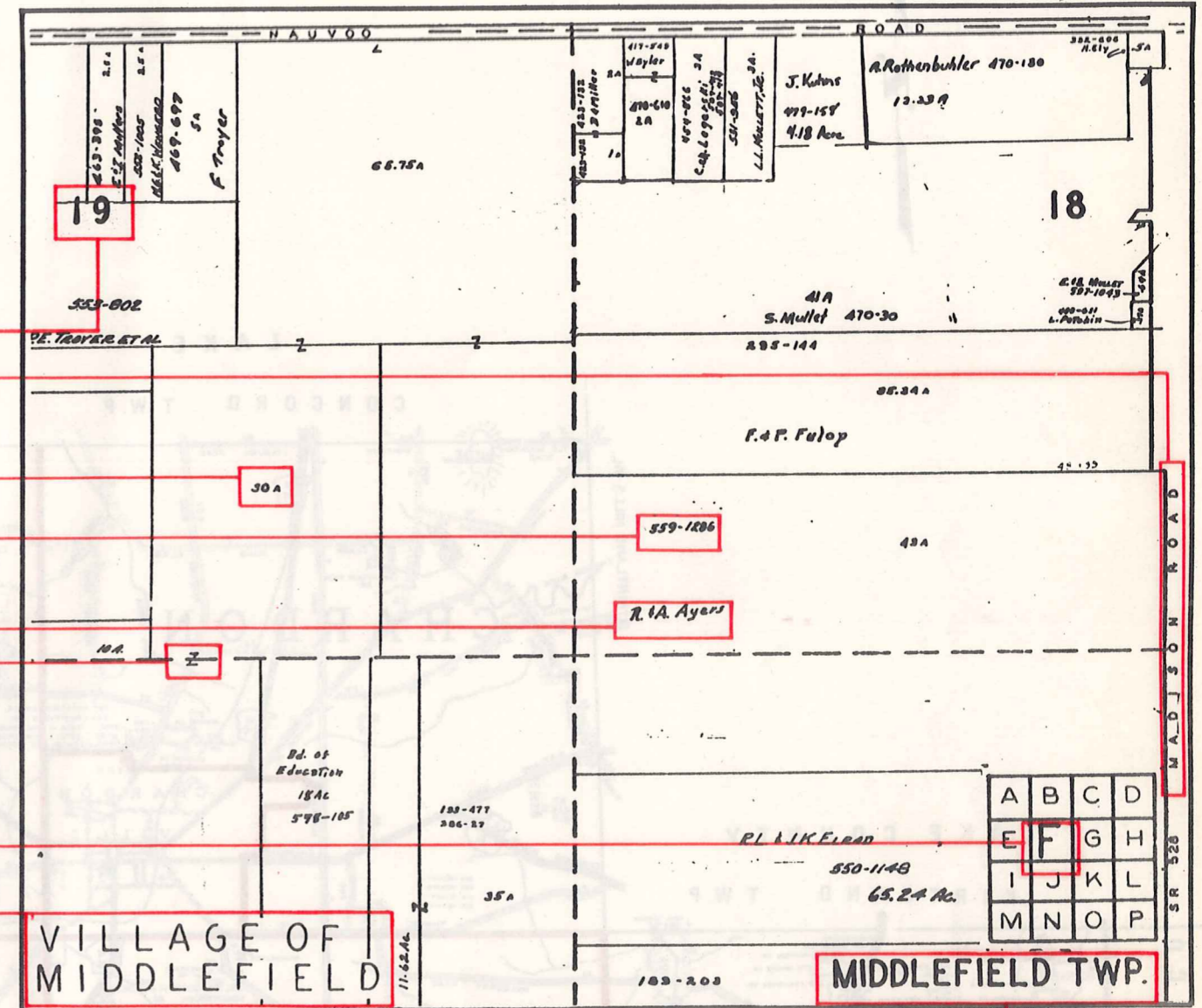
Explanation and Use Sheet for Geauga County, Ohio

SAMPLE (PARTIAL) COUNTY INDEX MAP



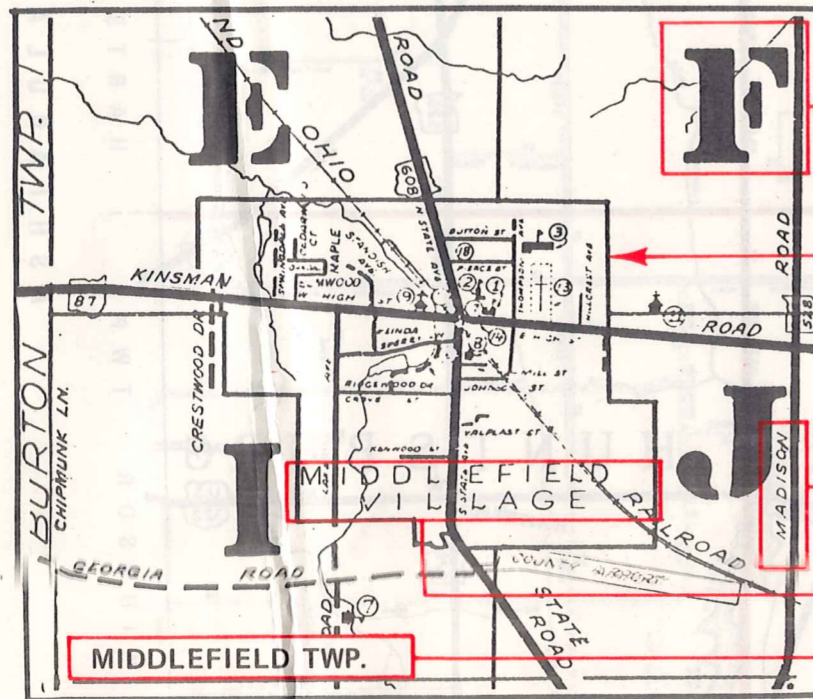
- Township Boundary
- Township Name
- Village Boundary
- Village Name
- Tract Lot Number
- Street Name
- Acreage
- Deed Book & Page
- Owners Name
- Denotes Continous Ownership

SAMPLE (PARTIAL) MAP PAGE



- Map Page Number
- Village Name
- Village Boundary
- Township Name

SAMPLE (PARTIAL) MUNICIPALITY INDEX MAP



- Street Name
- Village Name
- Township Name

USE OF THE MAP VOLUME

1. LOCATE THE GENERAL AREA OF INTEREST ON THE COUNTY INDEX MAP, ATLAS PAGE 'B', AND NOTE THE MUNICIPALITY NAME (TOWNSHIP OR VILLAGE).
2. REFER TO THE TABLE OF CONTENTS, ATLAS PAGE 'C', AND NOTE THE BEGINNING ATLAS PAGE NUMBER FOR THE MUNICIPALITY OF INTEREST.
3. TURN TO THE PAGE INDICATED. ON THIS PAGE WILL APPEAR AN INDEX MAP FOR THAT MUNICIPALITY.
4. LOCATE THE GENERAL AREA OF INTEREST AND NOTE THE MAP PAGE NUMBER. THIS MAY BE EITHER A LETTER OR A NUMBER.
5. MAP PAGES ARE IN ALPHABETICAL (OR NUMERICAL) SEQUENCE FOLLOWING THE MUNICIPALITY INDEX MAP. FOLLOW SEQUENCE TO THE MAP PAGE INDICATED.
6. LOCATE SPECIFIC PARCEL OF INTEREST AND NOTE THE DESIRED INFORMATION.

NOTE: ON SOME MAPS YOU MAY BE REFERRED TO A DETAIL SHEET SHOWING AN ENLARGEMENT OF THE AREA. THESE MAPS ARE FOUND AT THE END OF THE REGULAR MAP PAGES IN EACH MUNICIPALITY IN EITHER ALPHABETICAL OR NUMERICAL SEQUENCE.

NOTE: CHARDON VILLAGE HAS TITLE SHEETS. TO LOCATE OWNERS NAME, NOTE THE PARCEL NUMBER, REFER TO THE TITLE PAGE FOLLOWING THE MAP OF INTEREST, FOLLOW NUMERICAL SEQUENCE TO THE PARCEL NUMBER OF INTEREST AND NOTE THE DESIRED INFORMATION. IN ALL OTHER MUNICIPALITIES THE OWNERS NAME APPEARS ON THE MAP PAGE.

This book is the property of REAL ESTATE DATA, INC. and is distributed by REDI under a leasing arrangement requiring return to REDI upon termination of the lease. REDI reserves the right to reclaim this book if found in the possession of any firm or person where possession was obtained through any unauthorized source.